



Your Trusted Partner

KHULNA SHIPYARD LIMITED

Since 1957



An Enterprise of Bangladesh Navy

www.khulnashipyard.com



02 KHULNA SHIPYARD LIMITED



Vision

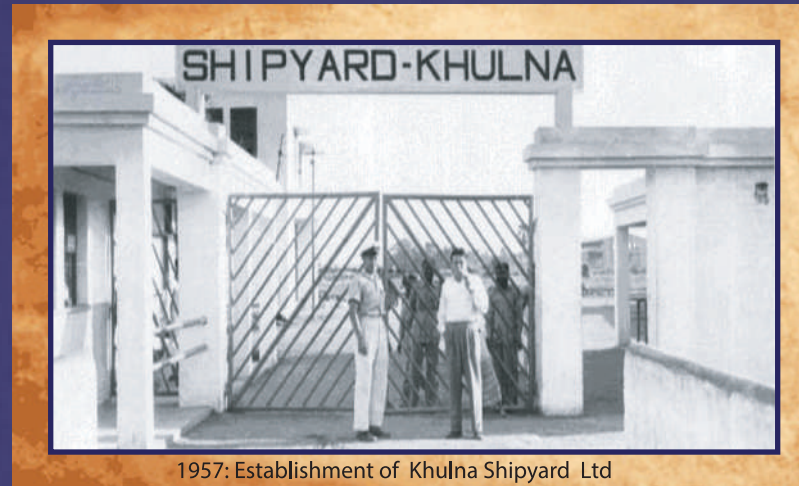
- Become an internationally recognized shipbuilding industry.
- Earn customer's reliability and satisfaction.
- Become an export oriented shipyard.



- Our Mission is to provide complete service to our customers in shipbuilding, repair, fabrication, construction, industrial maintenance through professional expertise.
- Ensure quality, in timely delivery and safety.
- Research & Development (R&D).
- Commercial expansion of KSY Rubber Factory.
- Collaboration with reputed foreign and international shipyard to enhance the new ship building capacity.

Historical Background

KSY was established in 1957 with the assistance of M/S Stulcken Sohn, Hamburg, Germany. Till 1965, the yard was jointly operated by German and British Companies. In 1965, the then East Pakistan Industrial Development Corporation (EPIDC) took over the management of the yard. After the independence of Bangladesh, the yard was placed under Bangladesh Steel & Engineering Corporation (BSEC) on 26 Mar 1972. The yard was running on marginal profit till 80s and then started to incur loss in the 90s. Once, the Government decided to privatize the industry. However on 03 Oct 1999, the yard was handed over to BN as a sick industry with huge loss. Presently, the Shipyard is an independent government commercial enterprise managed and operated by BN. KSY is the first and only war shipbuilder who built LPC & PC for Bangladesh Navy and IPV for Bangladesh Coast Guard. KSY is the highest tax payer in this region. KSY is earning good profit after managing and paying its big workforce (around 2000).



1957: Establishment of Khulna Shipyard Ltd



1999: Handing Over of KSY to BN

KSY is located at Khulna, Bangladesh with 68.97 acres of land on the western bank of the river Rupsha. KSY provides high qualitative and cost effective solutions through professional expertise and systematic operations in shipbuilding, maintenance and repair services to customers. Over the years, KSY has developed into a leading operating enterprise in the field of new building and repair of ships, marine services as well as manufacturing of engineering items in order to support various industries of Bangladesh. KSY is an ISO 9001:2015 certified shipbuilding industry and it has been building ships under Classification Societies like BV, LR, NKK, CCS, DNV-GL and RINA.

Our Valued Customers

Our New Shipbuilding Customer

-  Bangladesh Navy
-  Bangladesh Army
-  Bangladesh Coast Guard
-  Border Guard Bangladesh
-  Bangladesh Inland Water Transport Authority
-  Bangladesh Inland Water Transport Corporation
-  Payra Port Authority
-  Chattogram Port Authority
-  Mongla Port Authority
-  Fire Service & Civil Defence
-  Bangladesh Fisheries Research Institute
-  Bangladesh Water Development Board

Our Manufacturing Industry Customer

- Dhaka City Corporation
- Khulna City Corporation
- Roads & Highway , Dhaka
- North-West Power Generation Company Ltd
- Bangladesh India Friendship Company Limited
- United Land Port
- Energypac Power Generation Ltd.
- Navana LPG, Navana Group.
- AMCEE Group.
- Mongla Cement Factory Ltd.
- Meghna Cement Factory Ltd.
- Dubai Bangladesh Cement Factory Ltd.
- Faridpur Sugar Mills Ltd.
- Joypurhat Sugar Mills Ltd.
- Kushtia Sugar Mills Ltd.
- Mobarakgonj Sugar Mills Ltd.
- Natore Sugar Mills Ltd.
- North Bengal Sugar Mills Ltd.
- Pabna Sugar Mills Ltd.
- Panchagarh Sugar Mills Ltd.
- Rajshahi Sugar Mills Ltd.
- Rangpur Sugar Mills Ltd.
- Setabgonj Sugar Mills Ltd.

Board of Directors

**Chairman
Chief of Naval Staff**

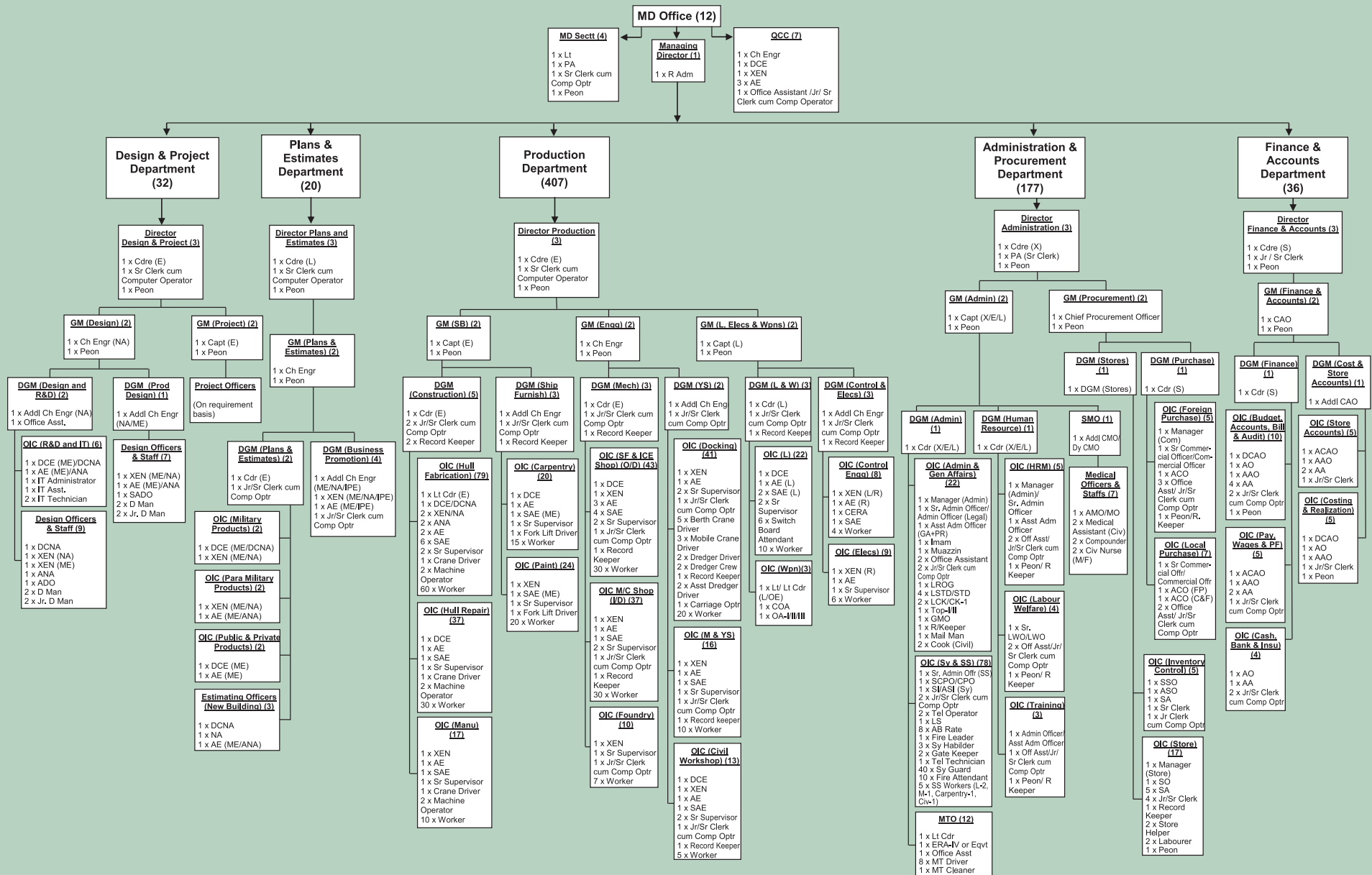


Board Members

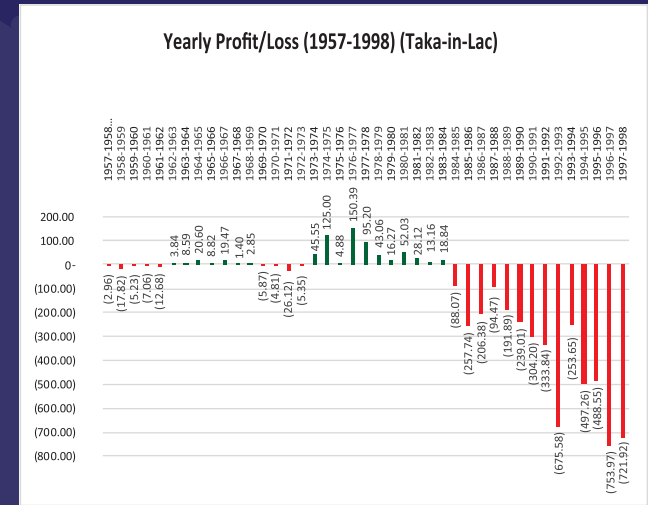
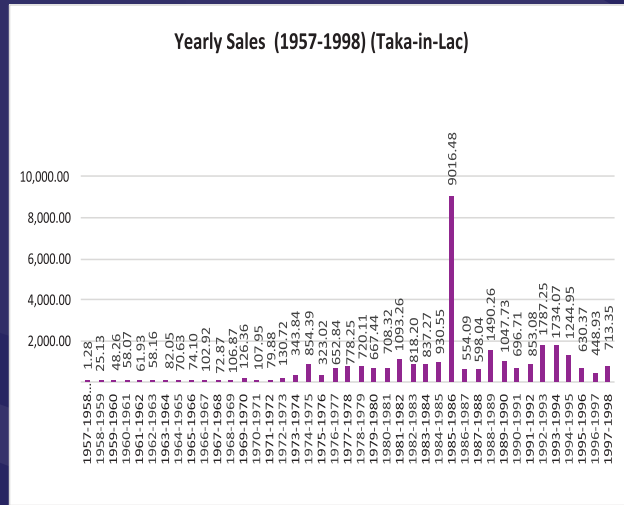
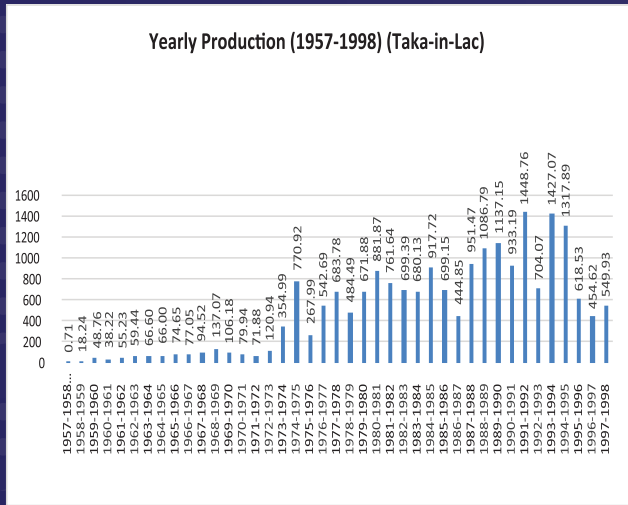
- 01 Assistant Chief of Naval Staff (Material), Vice Chairman
- 02 Assistant Chief of Naval Staff (Operations)
- 03 Assistant Chief of Naval Staff (Logistics)
- 04 Additional Secretary (General), Ministry of Defence
- 05 Additional Secretary (Admin), Ministry of Shipping
- 06 Additional Secretary (Admin), Ministry of Industries
- 07 Professor, Bangladesh University of Engineering and Technology
- 08 Commander Khulna Naval Area
- 09 Managing Director, Khulna Shipyard Limited
- 10 President, ICMAB
- 11 Director Ship Building, Chief Co-Ordinator
- 12 General Manager (Finance), KSY, Member Secretary
- 13 General Manager (D & P), Khulna Shipyard Limited



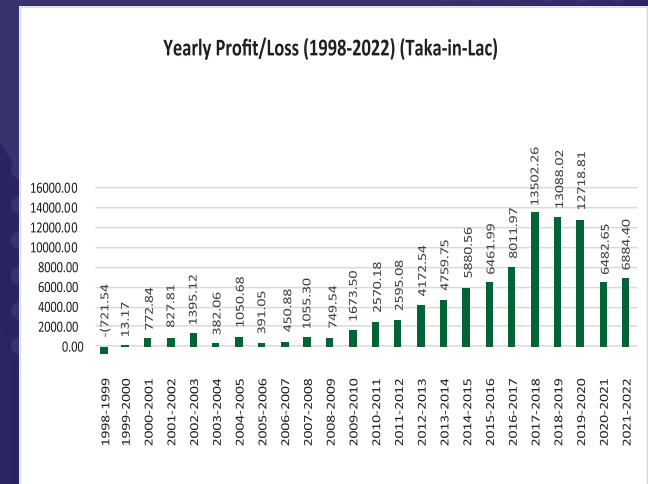
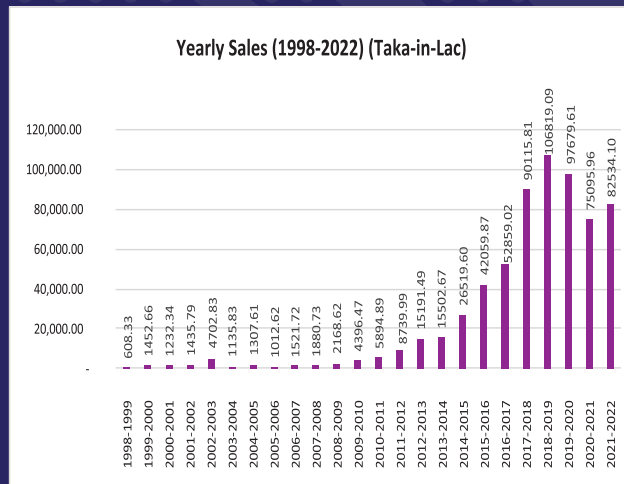
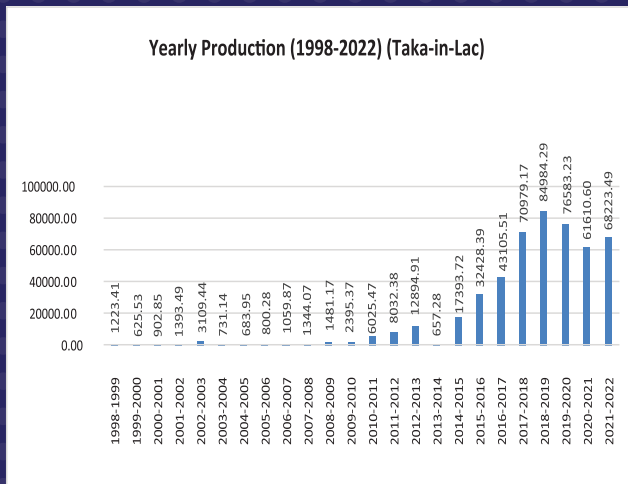
ORGANIZATION - KHULNA SHIPYARD LIMITED



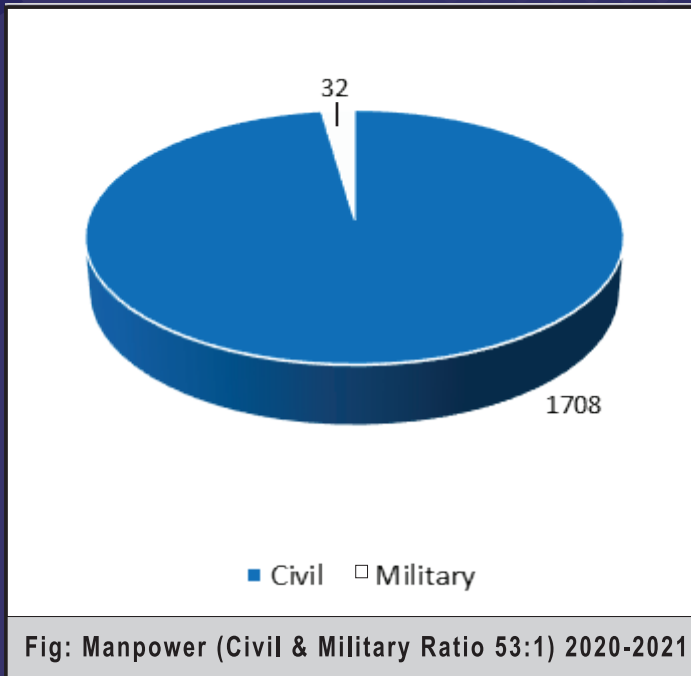
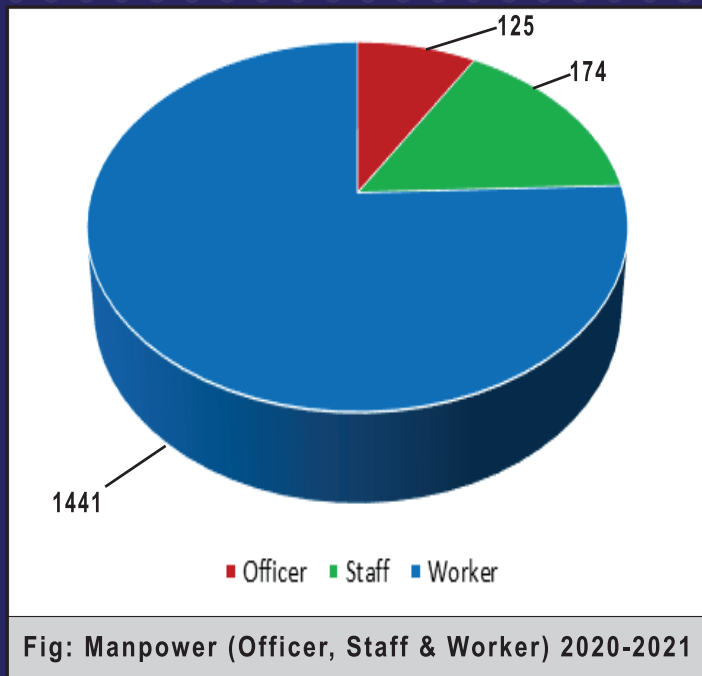
Economic condition of Khulna Shipyard before handover to Bangladesh Navy



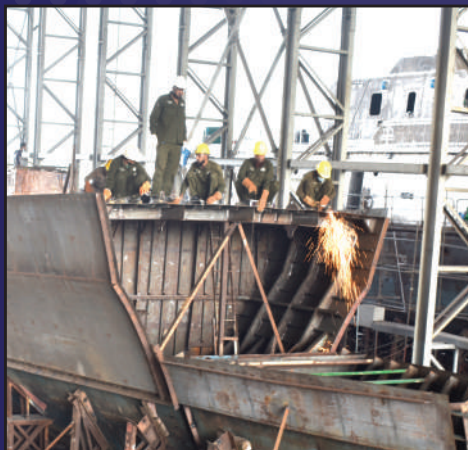
Economic condition of Khulna Shipyard after handover to Bangladesh Navy



Human Resource



OUR STRENGTH	
• Mechanical Engineer	32
• Naval Architect	13
• Electrical & Electronics Engineer	13
• Civil Engineer	05
• Chemical Engineer	02
• Polymer Engineer	02
• Marine Engineer	08
• Metallurgy Engineer	01
• Manager	04
• Accounts Chief Officer	01
• Store Chief Officer	01
• Admin and HR officer	13
• Asistant Drawing Officer	01
• IT Expert	01
• Draftsman/Design Assistant	06
• Supervisor	40
• Foreman	24
• Office Staff	132
• High Skilled Worker	927
• Semi Skilled Worker	260
• Skilled Worker	58
Total	1544



Your Trusted Partner

Standard //

This organisation is **ISO 9001:2015** standard certified by Bureau Veritas.



Classification Societies

Our shipbuilding works are accepted and certified by various classification societies like:



Bureau Veritas (BV)



Det Norske Veritas-Germanischer Lloyd (DNV-GL)



Nippon Kaiji Kyokai (NKK)



China Classification Society (CCS)



Lloyd's Register (LR)



Registro Italiano Navale (RINA)

We Ensure

- * Proven Technical Reliability
- * Quality Assurance
- * Timely Delivery
- * Competitive Price
- * Customer's Satisfaction



What We Do

- ❑ Modern Shipbuilding including Warship
- ❑ Repair Work of all Types of Ships
- ❑ Engineering Works
- ❑ Fabrication of Steel Structure
- ❑ Design and Fabrication of Steel Structure
- ❑ Ferrous, Gun Metal, White Metal Casting up to 10 Tons
- ❑ Manufacturing of Rubber Products
- ❑ Dredging, Earth Filling and Civil Works
- ❑ Motor Transport Repair and Maintenance

Design, Planning and R&D

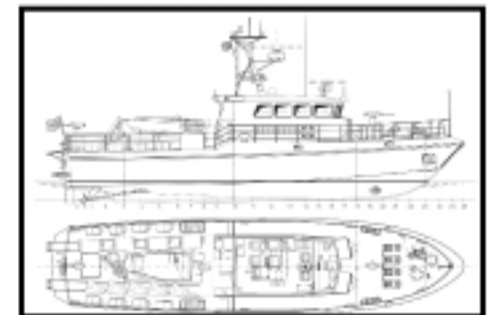
Major Own Design Works

- Tug Boat
- Landing Craft Utility (LCU)
- Fisheries Research Vessel
- Hydrographic Survey Vessel
- Fire Fighting Boat & Ship
- Different Types of Steel Structure
- Rubber Product & Mold Design
- Nesting Drawing and Coding
- Own Design of small crafts
- GA, Profile, Linesplan Drawing
- Basic Drawing



Software Uses

- Maxsurf-16
- Rhinoserosus
- FastCam
- FastNest
- FORAN-V70
- AutoCAD
- Ship Constructor
- Solid Works and others



- Design and R&D of Ship Building and repair (warship & commercial vessels)
- Tendering, Project Development and Estimation

Yard Facilities

- ✓ Docking and Undocking of vessels up to 700 DWT and overall length of 90 meter
- ✓ 10 x tracks to build/ repair vessels
- ✓ Heavy Duty Crane
- ✓ 8 x Berth for ship berthing
- ✓ Heavy Load Transporter
- ✓ Workshop Crane and Fork Lifter
- ✓ Production Capacity: 4000 tons of steel work per year.



Heavy Lifting Facilities

Khulna Shipyard Ltd has sufficient number of crane and vehicles to support all kind of shipbuilding and ship repair works. They are:



Crane

KSY has cranes of different load bearing capacities



Heavy Load Transporter

Heavy Load Transporter with Capacity of 75 tons



Workshop Crane and Fork lift

To make the work easy and time consuming, each workshops are equipped with overhead crane and fork lifters



Shipbuilding Facilities

- ❑ Plater Shop
- ❑ Machine Shop
- ❑ Electrical and Radio Electrical Shop
- ❑ Foundry Shop
- ❑ Carpentry Shop
- ❑ Rubber Factory
- ❑ Docking Section
- ❑ DPM Section

KSY has an all-weather construction capable fabrication shed. This fabrication shed has remarkably enhanced the shipbuilding capacity of KSY.

With its twin tracks (33 m height and 100 m length) and 2 x 20 ton capacity overhead crane above each track enriched the production capability.



Plater Shop

It is the heart of ship building/ repair and fabrication of steel structures. Plater Shop provides the following facilities:

- Construction and Repair of Hull & Structure
- AC Arc, DC Arc, TIG & MIG Welding Machine
- Plasma Cutting Machine
- Gas Welding & Cutting
- Plasma Gas Cutting
- Fabrication of Spares
- 2 x CNC Cutting Machine
- Electric Overhead Crane
- Plate Bending Roller & Fly Shearing Machine
- Vertical Radial Drill & Beveling Machine
- Hydraulic Pneumatic Hammer
- Hydraulic Press Bending Machine



Machine Shop

Machine Shop proficiently performs following works:

- ◆ Heavy Engineering Works
- ◆ Installation of Engine and Machinery
- ◆ Engine Alignment, Shaft Alignment
- ◆ Pipe Fitting, Shaft Boring Operation
- ◆ Pump Fitting and Testing
- ◆ Shaft Machining
- ◆ Surface Finishing
- ◆ Propeller Balancing



Electrical and Radio Electrical Workshop

Electrical and Radio Electrical shop performs vital role both in new building and repair ship. This workshop has the capability to repair and maintenance of all types of motor, alternator, transformer, rectifier, converter, electrical equipment, navigation and communication equipments, air condition, refrigerator etc.



Foundry Shop

Foundry shop has the facility and capacities of making all types of mold and core for sand casting. It fabricates various types of bush, sleeve, packing gland, stuffing box, lantern ring for ships, pontoon, Machining etc.



Carpentry Shop

Over the last few decades this workshop has attained the expertises in making finest wooden furniture's. Beside wooden works this workshop has the capability to do sand blasting, sail and color work, painting, interior decoration, GRP works, glass & fiber works, tin shed making etc.



Your Trusted Partner

Rubber Factory



KSY Rubber Factory is built to produce quality rubber product for ships, submarines, tugs, pontoons, boats, jetties etc of Bangladesh Navy, Coast Guard, Port Authorities and other maritime organizations.



- ✓ Rubber spares are manufactured with quality raw materials.
- ✓ All Spare's are performed with lab test.
- ✓ Items are delivered to the customers along with Quality Control (QC) certificate.
- ✓ Certified by BV (Bureau Veritas)



- ✓ Foreign Trained Engineers
- ✓ Skilled Technician
- ✓ Machining Polimer and Chemical Engineers
- ✓ Modern and Hightech Machinerries are Used

Motor Transport Workshop

It is a subsidiary workshop of Khulna Shipyard Ltd. It is situated inside BNS ISSA KHAN base, New Mooring, Chattogram. All kinds of vehicle maintenance support, servicing and repair works are carried out with advance technology and skilled manpower. It offers best possible services to customers for attaining their full satisfaction.



Major Shipbuilding Projects of KSY



05 x Patrol Craft (Batch-2) Under Construction at KSY for Bangladesh Navy
Length - 51.65 m; Breadth - 7.50 m; Draft - 1.95m; Speed- 21 Knot; Displacement -307 T



02 x Large Patrol Craft BNS DURGAM & NISHAN Constructed at KSY for Bangladesh Navy
Length - 64.2 m; Breadth - 9.0 m; Draft - 3.6m; Speed- 27 Knot; Displacement - 709T



05 x Patrol Craft (Batch-1) Constructed at KSY for Bangladesh Navy
Length - 50.4 m; Breadth - 7.50 m; Draft - 1.9; Speed- 23 Knot; Displacement - 307 T



02 x Submarine Handling Tug Boat BNT HALDA & PASSUR Constructed at KSY for Bangladesh Navy
 Length - 32.0 m; Breadth - 11.6 m; Draft - 5.0 m; Bollard Pull - 60T; Speed- 12 Knot; Displacement - 555T



02 x Hydrographic Survey Vessel Constructed at KSY for Bangladesh Navy
 Length - 30.98 m; Breadth - 8.40 m; Draft- 1.65 m; Speed- 14 Knot; Displacement - 135T



04 X Landing Craft Utility Constructed at KSY for Bangladesh Navy
 Length - 42 m; Breadth - 10.0 m; Draft - 1.2 m; Speed- 12 Knot; Displacement - 400T



02 X Container Vessel Constructed at KSY for Nou Kallan Foundation
 Length- 75 m; Breadth- 15m; Draft-3.5m; Speed - 10 Knots



Your Trusted Partner



03 x Inshore Patrol Vessel Constructed at KSY for Bangladesh Coast Guard
Length - 51.20 m; Breadth - 7.5 m; Draft - 1.94 m; Speed- 23 Knot; Displacement - 307T



13 X Pontoon Constructed at KSY for Bangladesh Coast Guard
Length- 30.0 m; Breadth- 8.5m; Draft- 1.1m



02 X TUG BOAT Constructed at KSY for Bangladesh Coast Guard
Length - 30.0 m; Breadth - 10.43 m; Draft - 4.8 m; Bollard Pull - 60t; Speed- 13 Knot; Displacement - 555 T



Floating Crane Constructed at KSY for Bangladesh Coast Guard
Length - 41.00 m; Breadth - 15.00 m; Draft - 1.65m; Speed- 08 Knot; Displacement - 15.8T



01 x VESSEL TYPE C (LCVP) for Bangladesh Army
Length- 19.85m; Breadth- 7.0m ; Draft-1.58m; Speed - 15 knots



01 x Container Vessel for Gulf Orient Seaways Pvt. Ltd.
Length- 74.81 m; Breadth- 12.00 m ; Draft -3.8; Speed - 12 knots; Displacement - 2500T



02 X Pontoon Constructed at KSY for BIWTA
Length- 36.6 m; Breadth- 10.67m; Draft- 0.45m; Displacement - 205T



08 X Pontoon Constructed at KSY for Fire Service & Civil Defence
Length- 20 m; Breadth- 8.0m; Depth- 2m



03 X Fire Fighting Boat Constructed at KSY for Fire Service & Civil Defence
 Length- 17.0 m; Breadth- 4.2 m ; Speed - 20 knots; Draft - 1.05m; Displacement - 27.37T



02 x Heavy Duty Speed Boat Constructed at KSY for Payra Port Authority
 Length- 34.9 m; Breadth- 6.92m ; Draft; -2.0; Speed - 25 knots; Displacement - 190T



02 x Pilot Vessel Constructed at KSY for Payra Port Authority
 Length - 36.0 m; Breadth - 7.0 m; Draft - 1.80 m; Speed- 24 Knots; Displacement - 170T



2 x Container Vessels Constructed at KSY for BIWTC
 Length- 76.0m; Breadth- 15m ; Draft; -3.8; Speed - 12; knots; Displacement - 2300T



06 x High Speed Boat for Bangladesh Coast Guard

Length - 15.4 m; Breadth - 4.5 m; Draft- 1.1m; Speed- 27 Knot; Displacement - 15.1 T



02 x Jarip Boat for Bangladesh Navy

Length - 14.70 m; Breadth - 5.10 m; Draft- 1.0m; Speed- 16 Knot; Displacement - 17.5 T



Fisheries Research Vessel for Bangladesh Fisheries Research Institute

Length - 25.00 m; Breadth - 6.00 m; Draft- 1.4m Speed- 10 Knot; Displacement - 90T



02 x Fire Float Constructed at KSY for Fire Service & Civil Defence

Length - 18.85 m; Breadth - 5.35 m; Draft- 1.1m; Speed- 20 Knot; Displacement - 39 T

DPM Works

Civil Construction

Dredging & Piling

Our
Horizon

CC Block Making
Geo-Bag Dumping

Rehabilitation &
Resettlement Works

River
Protection
work at
Noria &
Janjira
Upozila -
Shariatpur
District



60 x Marineized Shelter Station at Bhasan Char Under Ashrayan Project-3



4 x Warehouse at Bhasan Char Under Ashrayan Project-3

Town
Protection
Project -
Rajbari
District



Four Storied High School Building for News Print Mill for MWPGCL at Khalagat, Khulna



1 x Warehouse for Payra Port Authority (1 Lac. Square Feet)

Kirtonkha
River
Protection
work -
Barisal
District

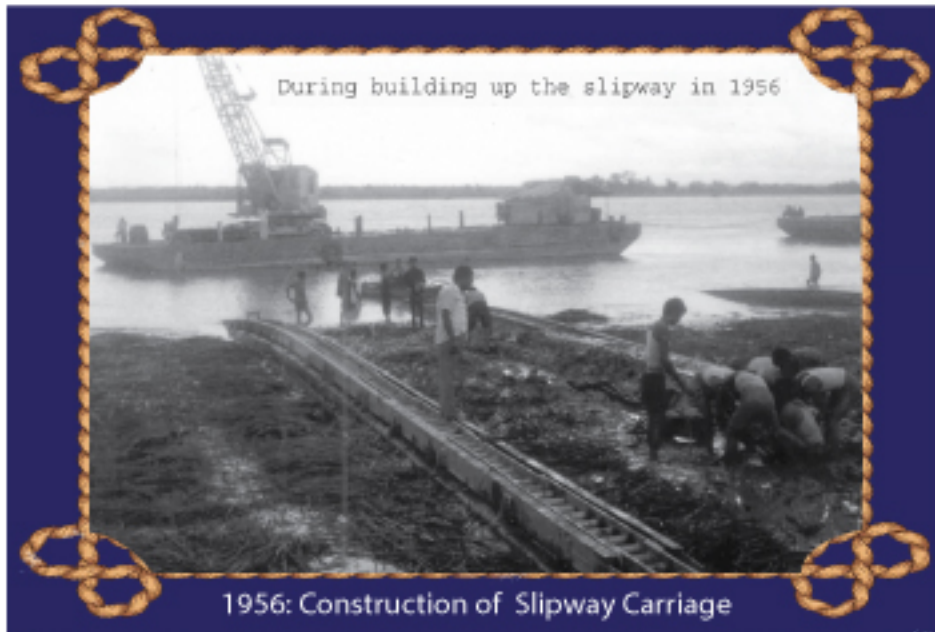


Rehabilitation & Resettlement works under Payra 1320 MW Thermal Power Plant Project

THE Gallery



1978: Ship Docked at KSY



During building up the slipway in 1956

1956: Construction of Slipway Carriage



শিপইয়ার্ড লিমিটেড এর হস্তান্তর অনুষ্ঠান
প্রধান অতিথি: গণপ্রজাতন্ত্রী বাংলাদেশ সরকারের
মাননীয় প্রধানমন্ত্রী

1999: Handing Over of KSY to BN by Prime Minister



2011: Keel Laying of 5 x Patrol Craft (First Ever War Ship Building at BD)



2013: Handing Over Ceremony of 5 PC



2015: Keel Laying of 2 x Large Patrol Craft



2016: Keel Laying of 2 x Submarine Handling Tug Boat



2017: Commissioning of 2 x Large Patrol Craft



2019: Inauguration of KSY Rubber Factory



2019: Handing Over of IPV & Keel Laying of HSB



2019: Ambassador of UAE Visited KSY Rubber Factory





2022: Members of DAMEN Shipyard Visited KSY



2022: Contract Signing Ceremony of Search & Rescue Boat, MPA



2022: Members of AFWC Visited KSY



2022: VCNS of Indian Navy Visited KSY



2022: Handing Over of Tug Boat, Floating Crane & High Speed Boat.



2022: PSO AFD Visited KSY



2022: Keel Laying Ceremony of Landing Craft Tank at KSY



2022: Chairman Payra Port Visited KSY Rubber Factory

Technical Training

- KSY TTC has started since 2010.
- 3035 personnel trained till November 2021. Under AEOSIB-SEIP recently 250 trainee has completed technical training on 10 trade like ship piping, welding and fabrication, electrical and navigation equipment, machine tools operation, ship painting, ship machinery installation etc.
- Every year average 500 students complete their technical training and received certificate.



- 75% certified trainees are employed in different industries at home and abroad.
- KSY TTC is actively participating on the countries development regarding human resource in engineering and technological sector.
- Our target is to develop good number of skilled technical personnel in line with the governments aim keeping vision 2030 and 2041 as milestone.

Corporate Social Responsibilities

Apart from business, KSY is always conscious about its Corporate Social Responsibilities (CSR) and develop facilities of its worker. As a part of CSR, KSY has health care facilities named Sick Bay, Employee's Club, Technical Training Centre (TTC), KSY School and College, Mosque and Madrasa.



Shipyard School and College



KSY Sick Bay



Mosque



Technical Training Centre



Madrasa

Capacity Enhancement

- KSY is developing a new yard with 5950 Sq - meter area.
- There will be portable rail and ballon launching facility with capacity of around 3000 DWT ship.
- Vessels of approximately 125 meter length and 5 meter draft can be docked and undocked at future in KSY.
- Military and Commercial vessel can be build with this new enhanced capacity in KSY.



New Yard

*"We hope that Bangladesh Navy would gradually be turned into **builder Navy** from a **buyer Navy**"*
- Prime Minister Sheikh Hasina



Achievements

- * Built 775 ships/vessels and repaired 2363 ships/vessels since 1957.
- * Achieved **2nd Best Corporate Award 2012** in other company categories from Institute of Cost and Management Accounting of Bangladesh (ICMAB).
- * Achieved **"National Productivity & Quality Excellence Award 2013"** from National Productivity Organisation (NPO), Ministry of Industries, Bangladesh.
- * Achieved company award 2013 as **"Best Shipbuilding Company of the Year"** by Business Asia, Bangladesh.
- * Achieved **"Business Excellence Award-2014"** from Singapore and **"ICMAB Best Performance Award- 2014"** from Bangladesh.
- * Achieved **2nd Positon "TAX CARD HONOR-2019"** from Internal Resources Division Bangladesh (IRDB) & Internal Board of Revenue (IBR).





Your Trusted Partner

Khulna Shipyard Team



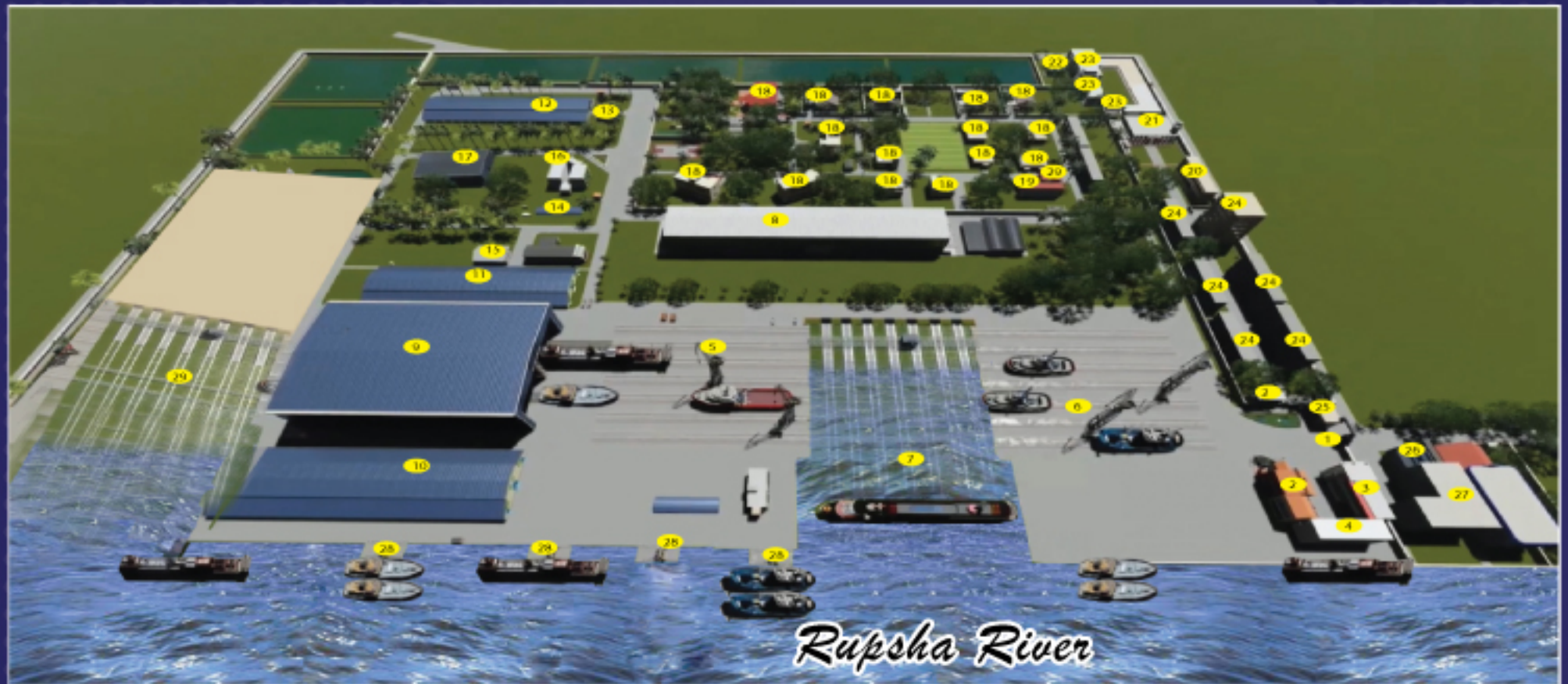
We work together for better future of KSY



Your Trusted Partner

KS4 at a Glance

- | | | | |
|------------------------------------|--|----------------------------------|-------------------------------|
| 01. Main Gate | 09. Fabrication Shed | 16. Customer Barrack | 24. Worker's Resident |
| 02. Admin Building | 10. Machine Shop, Electrical Shop | 17. Main Store | 25. Guard Room |
| 03. Conference Room | 11. Carpentry Shop and Maintenance Section | 18. Officer's Resident | 26. Worker's Canteen |
| 04. Design and Planning Department | 12. Rubber Factory | 19. Officer's Club and Gymnasium | 27. Technical Training Center |
| 05. Berth Crane | 13. Rubber Laboratory | 20. Madrasha | 28. Sick Bay |
| 06. Side Track (Berth) | 14. Foundry Shop | 21. Central Mosque | 29. Guest House |
| 07. Slipway Carriage | 15. Power House | 22. Primary School | 27. Docking Section |
| 08. Plater Shop | | 23. School and College | 28. Jetty |
| | | | 29. Future Enhancement Area |





KHULNA SHIPYARD LIMITED (KSY)

Bangladesh Navy (BN), Khulna-9201, Bangladesh

Phone : +88-02-477728988, 02-477720003, 02-44110987, 02-44110990
Fax : +88-02-477720404
E-mail : contact@khulnashipyard.gov.bd
Facebook : www.facebook.com/khulnashipyard

www.khulnashipyard.gov.bd